


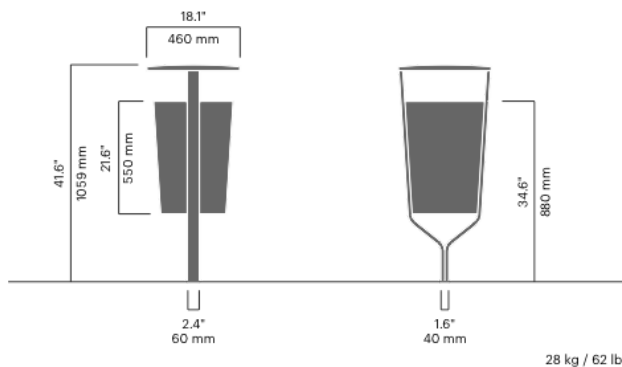
FOLK litter bin

4942A 

Designed by
Front

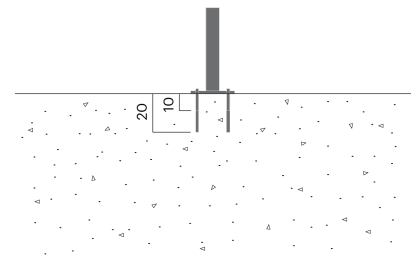
Folk litter bin is available in different models and sizes. Both can be embedded or anchored with a base plate. The largest model can be free-standing without anchoring. The FOLK litter bin is easy to empty by opening the door and removing the bin bag, with no heavy lifting required.

DOG AWARD



Anchoring/assembly

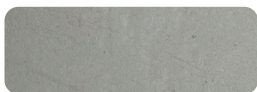
Type A - Base plate



Primary material

Hot-dip galvanised steel

All steel components are hot-dip galvanised, which produces a matt grey surface after a while. We offer a lifetime anti-rust warranty.



20 mm

Sustainability

Indicators	Global warming	Total energy used	Recycled materials
Unit	kg CO2	MJ	%
Cradle to Gate A1-A3	133.5	1944.42	17.32

Certifications



Warranty

- Lifetime warranty against rust
- 15 year warranty on powder coating
- 15 year warranty on wood
- Spare parts always available

Additional features on request

- Swivel
 Modular
 ADA
 USB
 LED
 HC
 Antigraff
 Water system
 Lifting hook
 Caster