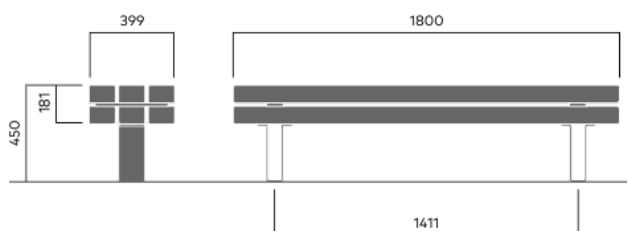


# KONG seat

## 4003A

Designed by  
Allan Hagerup

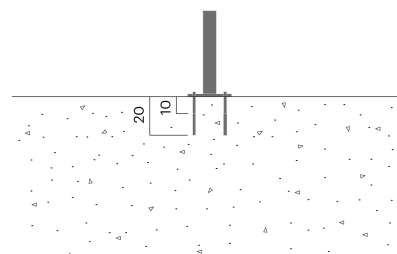
Kong seat takes its inspiration from the untouched nature of Scandinavia. These solid benches are available with or without a backrest and armrests, and can be used on their own or joined.



80 kg

## Anchoring/assembly

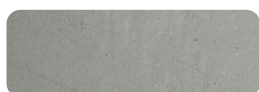
Type A - Base plate



## Primary material

Hot-dip galvanised steel

All steel components are hot-dip galvanised, which produces a matt grey surface after a while. We offer a lifetime anti-rust warranty.



8 mm

## Sustainability

Indicators	Global warming	Total energy used	Recycled materials
Unit	kg CO2	MJ	%
Cradle to Gate A1-A3	166.11	3289.2	1.51

## Certifications



## Warranty

- Lifetime warranty against rust
- 15 year warranty on powder coating
- 15 year warranty on wood
- Spare parts always available

## Additional features on request

- Swivel
- Modular
- ADA
- USB
- LED
- HC
- Antigraff
- Water system
- Lifting hook
- Caster