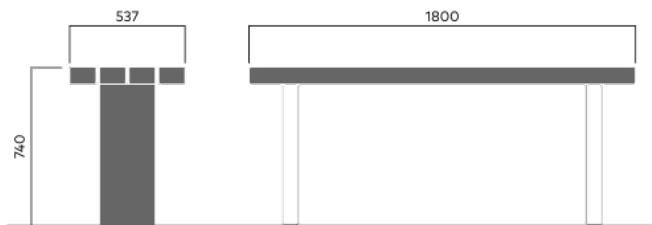


KONG table

4033A

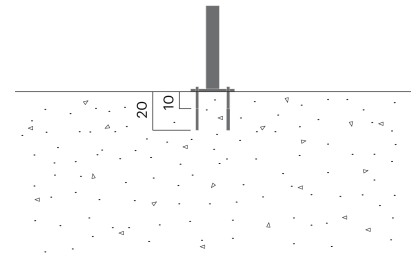
Designed by
Allan Hagerup

Kong table takes its inspiration from the untouched nature of Scandinavia and can be used on its own or joined.



Anchoring/assembly

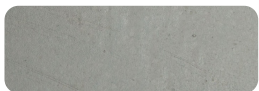
Type A - Base plate



Primary material

Hot-dip galvanised steel

All steel components are hot-dip galvanised, which produces a matt grey surface after a while. We offer a lifetime anti-rust warranty.



8 mm

Sustainability

Indicators	Global warming	Total energy used	Recycled materials
Unit	kg CO2	MJ	%
Cradle to Gate A1-A3	340.26	5128.28	2.31

Certifications



Warranty

- Lifetime warranty against rust
- 15 year warranty on powder coating
- 15 year warranty on wood
- Spare parts always available