

# KONG cube

4010

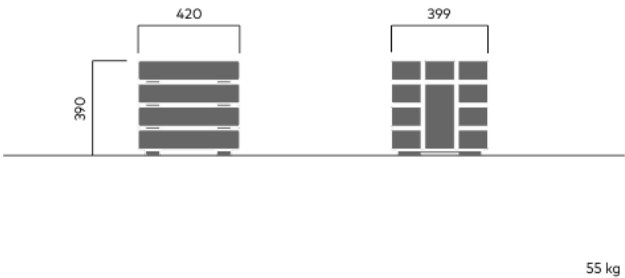
Designed by  
Allan Hagerup

Kong cube is a movable puff that can be used alone or in groups.



## Anchoring/assembly

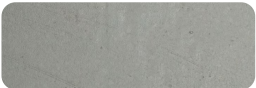
Free-standing/mounted to the ground



## Primary material

Hot-dip galvanised steel

All steel components are hot-dip galvanised, which produces a matt grey surface after a while. We offer a lifetime anti-rust warranty.



8 mm

## Sustainability

Indicators	Global warming	Total energy used	Recycled materials
Unit	kg CO2	MJ	%
Cradle to Gate A1-A3	74.16	1335.57	1.72

## Certifications



## Warranty

- Lifetime warranty against rust
- 15 year warranty on powder coating
- 15 year warranty on wood
- Spare parts always available