

VIA bench

1306

Designed by
Artur Wozniak, Hallvard Jakobsen

Via bench consists of straight and curved bench modules that can be used on their own or joined in rows, formations and circles. It can be supplied with LED lighting fitted under the seat.



Anchoring/assembly

Free-standing/mounted to the ground

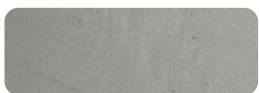


85 kg

Primary material

Hot-dip galvanised steel

All steel components are hot-dip galvanised, which produces a matt grey surface after a while. We offer a lifetime anti-rust warranty.



5 mm

Sustainability

Indicators	Global warming	Total energy used	Recycled materials
Unit	kg CO2	MJ	%
Cradle to Gate A1-A3	101.12	2095.88	1.46

Certifications



Warranty

- Lifetime warranty against rust
- 15 year warranty on powder coating
- 15 year warranty on wood
- Spare parts always available

Additional features on request

- Swivel
 Modular
 ADA
 USB
 LED
 HC
 Antigraff
 Water system
 Lifting hook
 Caster