

VROOM table

636

Designed by
Tore Borgersen, Michael Olofsson, Espen Voll

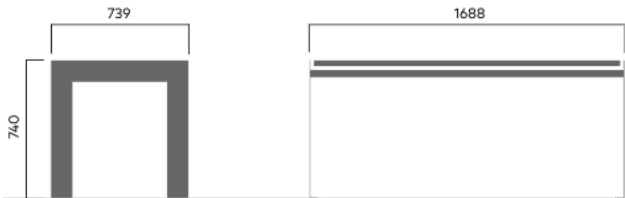
Vroom table comes in narrow, wide and square versions, and can be used on its own or joined to create a long table.



AWARD FOR DESIGN EXCELLENCE

Anchoring/assembly

Free-standing/mounted to the ground

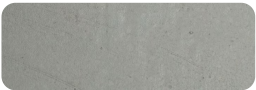


90 kg

Primary material

Hot-dip galvanised steel

All steel components are hot-dip galvanised, which produces a matt grey surface after a while. We offer a lifetime anti-rust warranty.



10 mm

Sustainability

Indicators	Global warming	Total energy used	Recycled materials
Unit	kg CO2	MJ	%
Cradle to Gate A1-A3	215.12	3641.73	1.9

Certifications



Warranty

- Lifetime warranty against rust
- 15 year warranty on powder coating
- 15 year warranty on wood
- Spare parts always available