

DIALOG litter bin

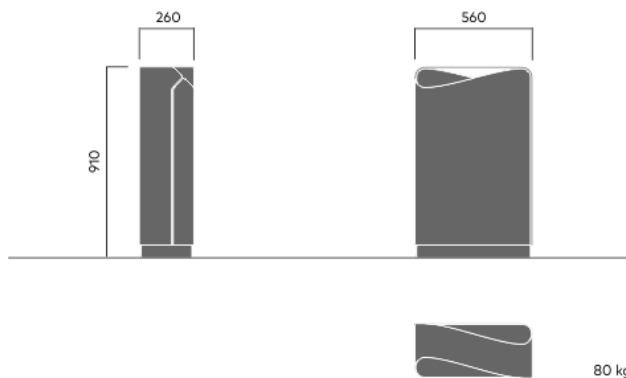
1442

Designed by
Allan Hagerup

Dialog litter bin has a friendly design that helps soften the outdoor environment. The use of diagonal symmetry is a recurring feature of the product range. The litter bin has a capacity of 100 litres and comes with a concrete base. It is easy to empty by opening the door and removing the bin bag, with no heavy lifting required.



AWARD FOR DESIGN EXCELLENCE



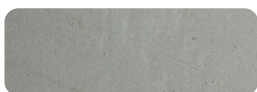
Anchoring/assembly

Free-standing/mounted to the ground

Primary material

Hot-dip galvanised steel

All steel components are hot-dip galvanised, which produces a matt grey surface after a while. We offer a lifetime anti-rust warranty.



4 mm

Sustainability

| Indicators | Global warming | Total energy used | Recycled materials |
|----------------------|----------------|-------------------|--------------------|
| Unit | kg CO2 | MJ | % |
| Cradle to Gate A1-A3 | 177.64 | 2443.79 | 2.78 |

Certifications



Warranty

- Lifetime warranty against rust
- 15 year warranty on powder coating
- 15 year warranty on wood
- Spare parts always available

Additional features on request

- Swivel
- Modular
- ADA
- USB
- LED
- HC
- Antigriff
- Water system
- Lifting hook
- Caster