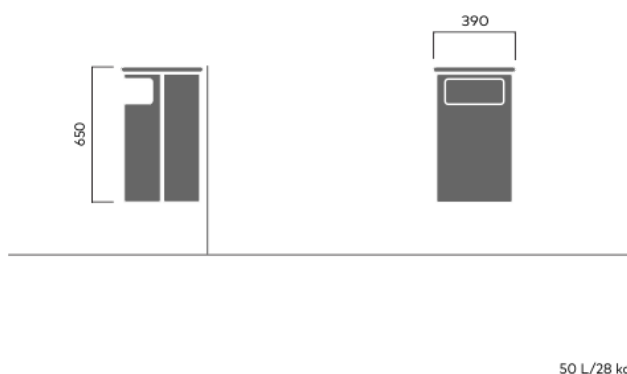


# CITY litter bin

241

Designed by  
Jarle Slyngstad, Roy Fiddaman, Jahn Aamodt

City litter bin is available as a free-standing version (70, 150 and 180 litres) or for mounting on a wall or post (50 litres). All the models can also be supplied with a domed top, with or without a built-in ashtray. A concrete base is recommended if the container is not going to be bolted down. The CITY litter bin is easy to empty by opening the door and removing the bin bag, with no heavy lifting required.

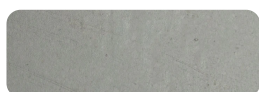


## Anchoring/assembly

## Primary material

Hot-dip galvanised steel

All steel components are hot-dip galvanised, which produces a matt grey surface after a while. We offer a lifetime anti-rust warranty.



3 mm

## Sustainability

Indicators	Global warming	Total energy used	Recycled materials
Unit	kg CO2	MJ	%
Cradle to Gate A1-A3	91.39	1274.34	2.68

## Certifications



## Warranty

- Lifetime warranty against rust
- 15 year warranty on powder coating
- 15 year warranty on wood
- Spare parts always available

## Additional features on request

- Swivel  
  Modular  
  ADA  
  USB  
  LED  
  HC  
 Antigraff  
 Water system  
 Lifting hook  
 Caster