

# KYOTO seat

2206

Designed by  
Kristin Schanche

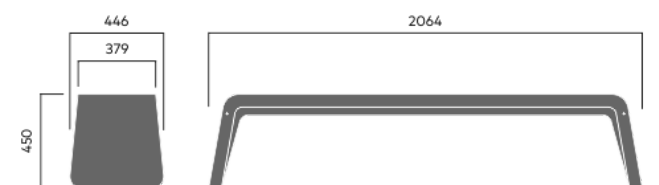
Kyoto seat is made from steel- and fibre-reinforced concrete in pale grey. It is available with or without a backrest and armrests. Bolting down is recommended



AWARD FOR DESIGN EXCELLENCE

## Anchoring/assembly

Free-standing/mounted to the ground

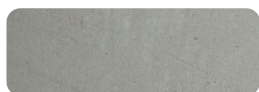


130 kg

## Primary material

Hot-dip galvanised steel

All steel components are hot-dip galvanised, which produces a matt grey surface after a while. We offer a lifetime anti-rust warranty.



6 mm

## Sustainability

Indicators	Global warming	Total energy used	Recycled materials
Unit	kg CO2	MJ	%
Cradle to Gate A1-A3	38.91	1399.17	4.53

## Certifications



## Warranty

- Lifetime warranty against rust
- 15 year warranty on powder coating
- 15 year warranty on wood
- Spare parts always available