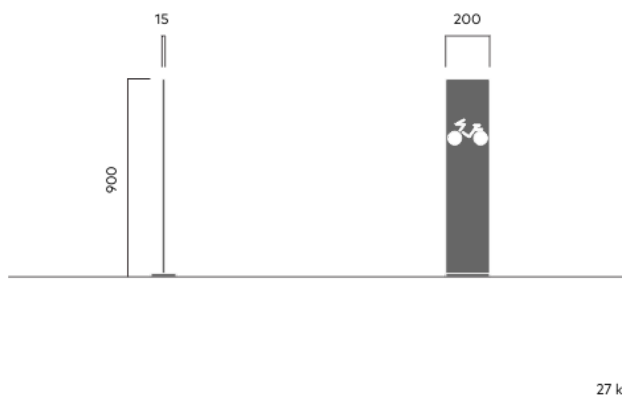


TOUR bicycle post

2886A

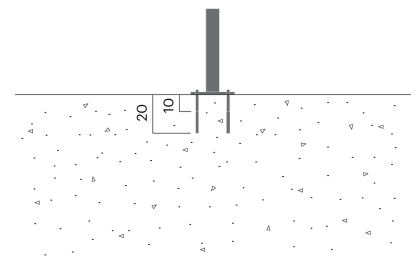
Designed by
Hallvard Jakobsen

Tour bicycle post offers good support for two bicycles and can be supplied with a laser-cut design of your choice.



Anchoring/assembly

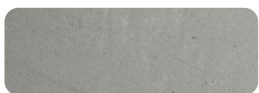
Type A - Base plate



Primary material

Hot-dip galvanised steel

All steel components are hot-dip galvanised, which produces a matt grey surface after a while. We offer a lifetime anti-rust warranty.



15 mm

Sustainability

Indicators	Global warming	Total energy used	Recycled materials
Unit	kg CO2	MJ	%
Cradle to Gate A1-A3	75.13	1045.8	2.69

Certifications



Warranty

- Lifetime warranty against rust
- 15 year warranty on powder coating
- 15 year warranty on wood
- Spare parts always available