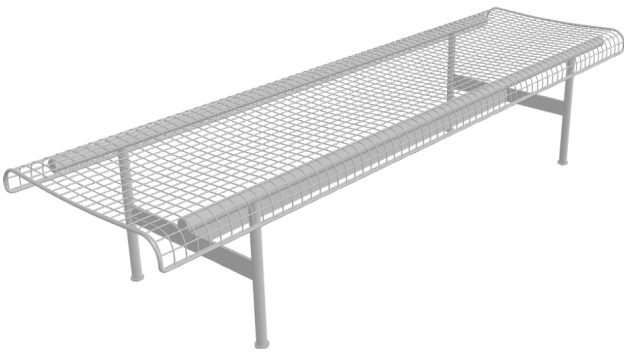


MUNCH seat

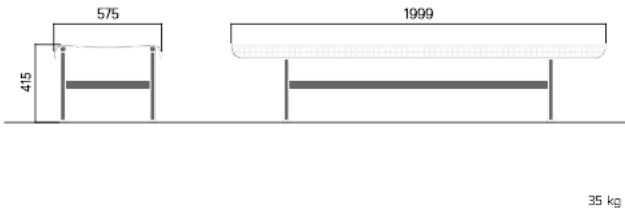
5106

Designed by
Andreas Engesvik, Jonas Stokke

Munch seat and the Munch-series comprise elegant lounge furniture for relaxation and contemplation. The series has been specially designed for the new Munch Museum in Oslo. The seating has an ergonomic shape that offers a high degree of comfort. Seats include a layer of springy steel mesh draped over a simple steel frame. Matching injection moulded cushion sets are also available. The Munch series is equally at home indoors and outdoors. In 2023, we are expanding our popular series through the addition of benches which have armrests for greater user-friendliness and comfort.

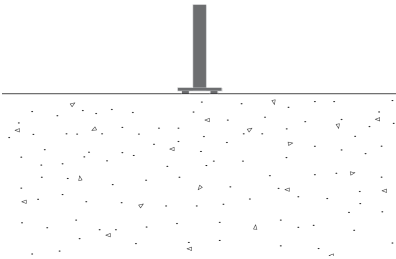


DOGA AWARD



Anchoring/assembly

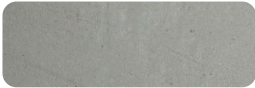
Free-standing



Primary material

Hot-dip galvanised steel

All steel components are hot-dip galvanised, which produces a matt grey surface after a while. We offer a lifetime anti-rust warranty.



Ø 25 mm

Sustainability

Indicators	Global warming	Total energy used	Recycled materials
Unit	kg CO2	MJ	%
Cradle to Gate A1-A3	110.35	1538.73	2.69

Certifications



Warranty

- Lifetime warranty against rust
- 15 year warranty on powder coating
- 15 year warranty on wood
- Spare parts always available