

# KYOTO table

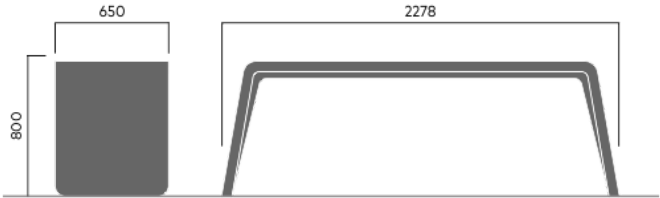
2236

Designed by  
Kristin Schanche

Kyoto table is made from steel- and fibre-reinforced concrete in pale grey. Bolting down is recommended.



AWARD FOR DESIGN EXCELLENCE



320 kg

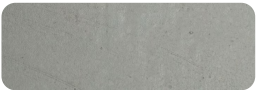
## Anchoring/assembly

Free-standing/mounted to the ground

## Primary material

### Hot-dip galvanised steel

All steel components are hot-dip galvanised, which produces a matt grey surface after a while. We offer a lifetime anti-rust warranty.



6 mm

## Sustainability

Indicators	Global warming	Total energy used	Recycled materials
Unit	kg CO2	MJ	%
Cradle to Gate A1-A3	104.89	3773.2	4.53

## Certifications



## Warranty

- Lifetime warranty against rust
- 15 year warranty on powder coating
- 15 year warranty on wood
- Spare parts always available