

BLOC table/lounge table

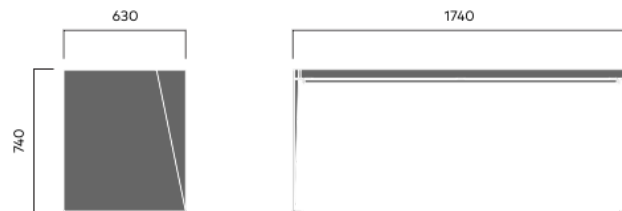
1536

Designed by
Atle Tveit, Lars Tornøe

Bloc table/lounge table can be used on its own or joined in rows to create long tables combined with benches, with or without a backrest and armrests.



AWARD FOR DESIGN EXCELLENCE



100 kg

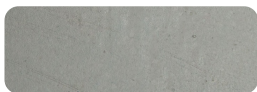
Anchoring/assembly

Free-standing/mounted to the ground

Primary material

Hot-dip galvanised steel

All steel components are hot-dip galvanised, which produces a matt grey surface after a while. We offer a lifetime anti-rust warranty.



8 mm

Sustainability

Indicators	Global warming	Total energy used	Recycled materials
Unit	kg CO2	MJ	%
Cradle to Gate A1-A3	273	4180	0

Certifications



Warranty

- Lifetime warranty against rust
- 15 year warranty on powder coating
- 15 year warranty on wood
- Spare parts always available