

BERLIN chair

3713A

Designed by
Tore Borgersen, Michael Olofsson, Espen Voll

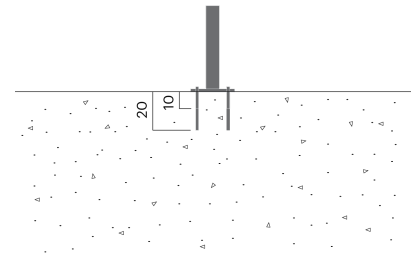
Berlin chair offers excellent comfort and support. It is available in a fixed or swivel version.



20 kg

Anchoring/assembly

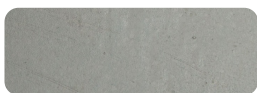
Type A - Base plate



Primary material

Hot-dip galvanised steel

All steel components are hot-dip galvanised, which produces a matt grey surface after a while. We offer a lifetime anti-rust warranty.



8 mm

Sustainability

Indicators	Global warming	Total energy used	Recycled materials
Unit	kg CO2	MJ	%
Cradle to Gate A1-A3	74.32	1149.94	2.19

Certifications



Warranty

- Lifetime warranty against rust
- 15 year warranty on powder coating
- 15 year warranty on wood
- Spare parts always available