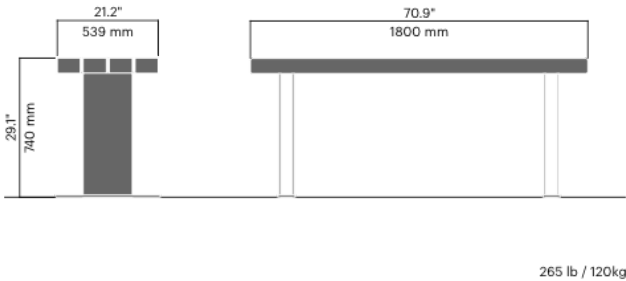


KONG table

4033A

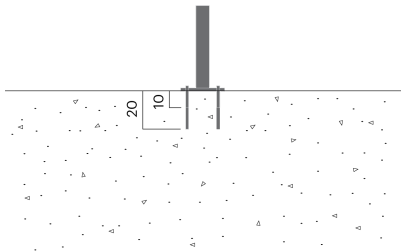
Designed by
Allan Hagerup

Kong table takes its inspiration from the untouched nature of Scandinavia and can be used on its own or joined.



Anchoring/assembly

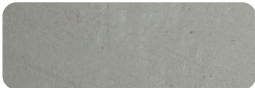
Type A - Base plate



Primary material

Hot-dip galvanised steel

All steel components are hot-dip galvanised, which produces a matt grey surface after a while. We offer a lifetime anti-rust warranty.



8 mm

Sustainability

| Indicators | Global warming | Total energy used | Recycled materials |
|----------------------|----------------|-------------------|--------------------|
| Unit | kg CO2 | MJ | % |
| Cradle to Gate A1-A3 | 340.26 | 5128.28 | 2.31 |

Certifications



Warranty

- Lifetime warranty against rust
- 15 year warranty on powder coating
- 15 year warranty on wood
- Spare parts always available