

MOVE bench

3106

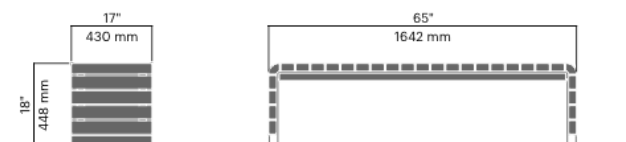
Designed by
Allan Hagerup

Move bench has rounded corner slats that continue down the sides and make the bench comfortable to sit on any which way.



Anchoring/assembly

Free-standing/mounted to the ground

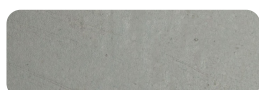


191.8 lb / 87 kg

Primary material

Hot-dip galvanised steel

All steel components are hot-dip galvanised, which produces a matt grey surface after a while. We offer a lifetime anti-rust warranty.



6 mm

Sustainability

Indicators	Global warming	Total energy used	Recycled materials
Unit	kg CO2	MJ	%
Cradle to Gate A1-A3	214.99	3374.92	2.15

Certifications



Warranty

- Lifetime warranty against rust
- 15 year warranty on powder coating
- 15 year warranty on wood
- Spare parts always available

Additional features on request

- Swivel
 Modular
 ADA
 USB
 LED
 HC
 Antigraff
 Water system
 Lifting hook
 Caster