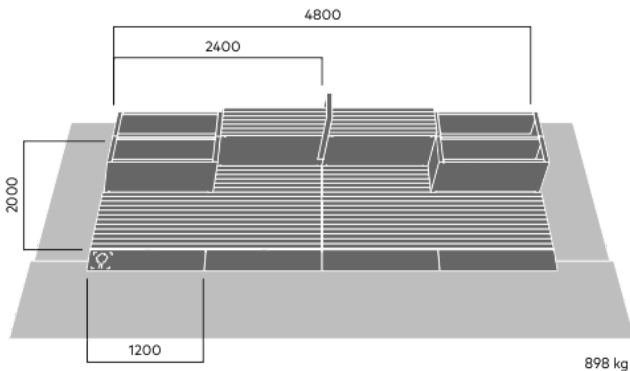
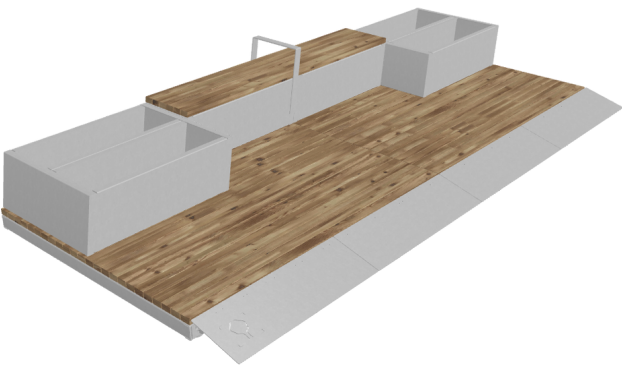


# PARKLETS 2.0 portal

4472

Designed by  
Hong Ngo-Aandal, SOLA, Johan Verde

Parklets 2.0 portal extends existing pavements to provide more space for people and plants. The range consists of six complete modules that can quickly be positioned in parking spaces that are no longer in use. The urban flooring is easy to move with an electric forklift and has adjustable feet so that it can be adapted to different situations and levels. The nonslip transition plates ensure a smooth join with the existing pavement.



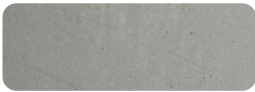
## Anchoring/assembly

Free-standing/mounted to the ground

## Primary material

Hot-dip galvanised steel

All steel components are hot-dip galvanised, which produces a matt grey surface after a while. We offer a lifetime anti-rust warranty.



5 mm

## Sustainability

Indicators	Global warming	Total energy used	Recycled materials
Unit	kg CO2	MJ	%
Cradle to Gate A1-A3	3070.52	46965.42	2.25

## Certifications



## Warranty

- Lifetime warranty against rust
- 15 year warranty on powder coating
- 15 year warranty on wood
- Spare parts always available