

MUNCH seat

5106

Designed by
Andreas Engesvik, Jonas Stokke

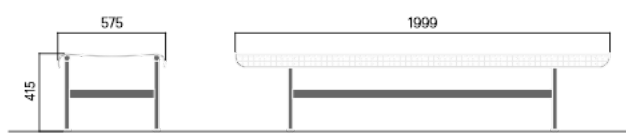
Munch seat The Munch series comprises elegant lounge furniture for relaxation and contemplation. The series has been specially designed for the new Munch Museum in Oslo. The seating has an ergonomic shape that offers a high degree of comfort. Seats include a layer of springy steel mesh draped over a simple steel frame. Matching injection molded cushion sets are also available. The Munch series is equally at home indoors and outdoors.



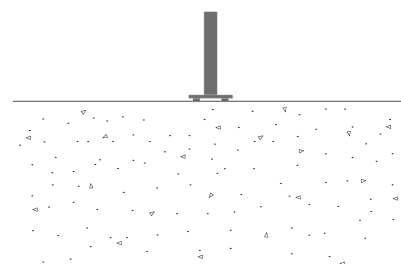
DOGA AWARD

Anchoring/assembly

Free-standing



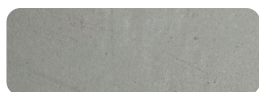
35 kg



Primary material

Hot-dip galvanised steel

All steel components are hot-dip galvanised, which produces a matt grey surface after a while. We offer a lifetime anti-rust warranty.



Ø 25 mm

Sustainability

Indicators	Global warming	Total energy used	Recycled materials
Unit	kg CO2	MJ	%
Cradle to Gate A1-A3	110.35	1538.73	2.69

Certifications



Warranty

- Lifetime warranty against rust
- 15 year warranty on powder coating
- 15 year warranty on wood
- Spare parts always available

Additional features on request

- Swivel
- Modular
- ADA
- USB
- LED
- HC
- Antigraff
- Water system
- Lifting hook
- Caster