

MUNCH table

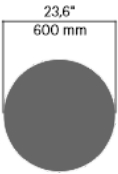
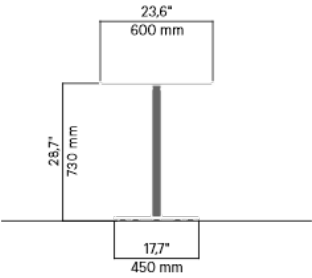
5132

Designed by
Andreas Engesvik, Jonas Stokke

Munch table and the Munch-series comprise elegant lounge furniture for relaxation and contemplation. The series has been specially designed for the new Munch Museum in Oslo. The seating has an ergonomic shape that offers a high degree of comfort. Seats include a layer of springy steel mesh draped over a simple steel frame. Matching injection moulded cushion sets are also available. The Munch series is equally at home indoors and outdoors.



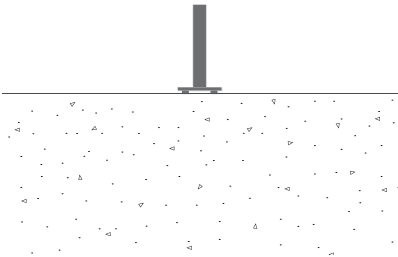
DOGA AWARD



30 kg / 66 lb

Anchoring/assembly

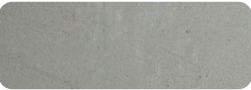
Free-standing



Primary material

Hot-dip galvanised steel

All steel components are hot-dip galvanised, which produces a matt grey surface after a while. We offer a lifetime anti-rust warranty.



6 mm

Sustainability

Indicators	Global warming	Total energy used	Recycled materials
Unit	kg CO2	MJ	%
Cradle to Gate A1-A3	113.22	1576.77	2.69

Certifications



Warranty

- Lifetime warranty against rust
- 15 year warranty on powder coating
- 15 year warranty on wood
- Spare parts always available