

# MUNCH table

5130

Designed by  
Andreas Engesvik, Jonas Stokke

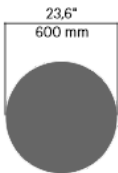
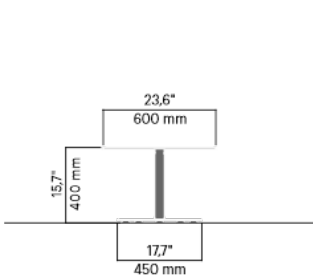
Munch table and the Munch-series comprise elegant lounge furniture for relaxation and contemplation. The series has been specially designed for the new Munch Museum in Oslo. The seating has an ergonomic shape that offers a high degree of comfort. Seats include a layer of springy steel mesh draped over a simple steel frame. Matching injection moulded cushion sets are also available. The Munch series is equally at home indoors and outdoors.



DOGA AWARD

## Anchoring/assembly

Free-standing/mounted to the ground

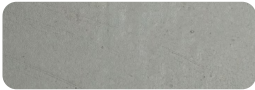


29 kg / 64 lb

## Primary material

Hot-dip galvanised steel

All steel components are hot-dip galvanised, which produces a matt grey surface after a while. We offer a lifetime anti-rust warranty.



## Sustainability

Indicators	Global warming	Total energy used	Recycled materials
Unit	kg CO2	MJ	%
Cradle to Gate A1-A3	0	0	0

## Certifications



## Warranty

- Lifetime warranty against rust
- 15 year warranty on powder coating
- 15 year warranty on wood
- Spare parts always available