

PLINTH table

5632A

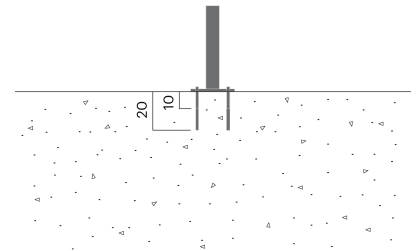
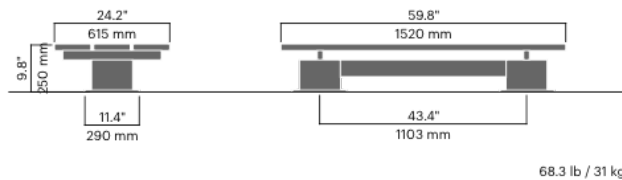
Designed by

Plinth table Outdoor areas are more important than ever before. We are therefore introducing the Plinth series, which is perfect for an enjoyable picnic in the city. People from a great diversity of cultures and backgrounds meet in the city's parks. By studying how people gather for meals, Note has designed a series of tables and benches in three heights and two lengths. The Plinth series includes a wide variety of modules that can be configured to create unique meeting places.



Anchoring/assembly

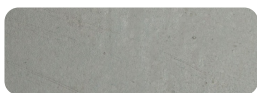
Type A - Base plate



Primary material

Hot-dip galvanised steel

All steel components are hot-dip galvanised, which produces a matt grey surface after a while. We offer a lifetime anti-rust warranty.



Ø219 mm

Sustainability

| Indicators | Global warming | Total energy used | Recycled materials |
|----------------------|----------------|-------------------|--------------------|
| Unit | kg CO2 | MJ | % |
| Cradle to Gate A1-A3 | 66.15 | 1116.07 | 1.91 |

Certifications



Warranty

- Lifetime warranty against rust
- 15 year warranty on powder coating
- 15 year warranty on wood
- Spare parts always available