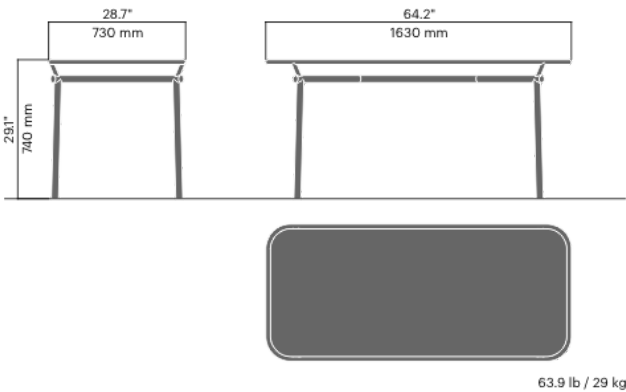


# POP table

3836

Designed by  
Kristine Five Melvær

Pop table has been developed for the benches in the same product family, but works just as well in conjunction with other furniture. The combination of a steel frame and perforated aluminum for the tabletop means that there are lots of colour options and makes the POP table a fun feature in the urban space.



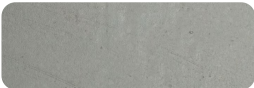
## Anchoring/assembly

Free-standing/mounted to the ground

## Primary material

Hot-dip galvanised steel

All steel components are hot-dip galvanised, which produces a matt grey surface after a while. We offer a lifetime anti-rust warranty.



## Sustainability

Indicators	Global warming	Total energy used	Recycled materials
Unit	kg CO2	MJ	%
Cradle to Gate A1-A3	0	0	0

## Certifications



## Warranty

- Lifetime warranty against rust
- 15 year warranty on powder coating
- 15 year warranty on wood
- Spare parts always available