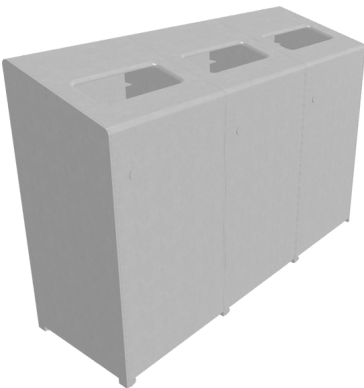


ACCEPTOR 110

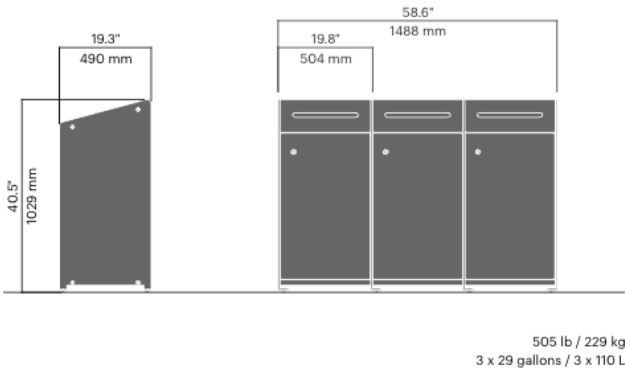
2192

Designed by
Artur Wozniak

Acceptor 110 is our smart modular waste-sorting system that can easily be adapted for an increased number of sorting options. The different openings come in optional colours to encourage and facilitate waste sorting, and the receptacles are easily emptied by opening the door and removing the bin bag. We have now redesigned the smallest unit Acceptor 110. The design has been optimised based off customer feedback and is now more in line with the larger Acceptor 160 version. The system is top-loading for easy access and is available with both rectangular and round openings and with an inner metal receptacle for glass.



>Uten bakplate - justert i katalog



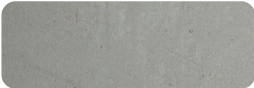
Anchoring/assembly

Free-standing/mounted to the ground

Primary material

Hot-dip galvanised steel

All steel components are hot-dip galvanised, which produces a matt grey surface after a while. We offer a lifetime anti-rust warranty.



3 mm

Sustainability

Indicators	Global warming	Total energy used	Recycled materials
Unit	kg CO2	MJ	%
Cradle to Gate A1-A3	274.93	383777	2.73

Certifications



Warranty

- Lifetime warranty against rust
- 15 year warranty on powder coating
- 15 year warranty on wood
- Spare parts always available