

BLOC table

1536

Designed by
Atle Tveit, Lars Tornøe

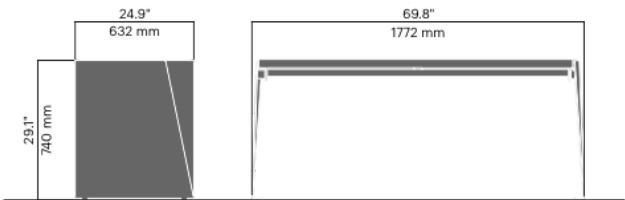
Bloc table can be used on its own or joined in rows to create long tables combined with benches, with or without a backrest and armrests.



AWARD FOR DESIGN EXCELLENCE

Anchoring/assembly

Free-standing/mounted to the ground

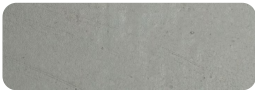


224.9 lb / 102 kg

Primary material

Hot-dip galvanised steel

All steel components are hot-dip galvanised, which produces a matt grey surface after a while. We offer a lifetime anti-rust warranty.



8 mm

Sustainability

| Indicators | Global warming | Total energy used | Recycled materials |
|----------------------|----------------|-------------------|--------------------|
| Unit | kg CO2 | MJ | % |
| Cradle to Gate A1-A3 | 273 | 4180 | 0 |

Certifications



Warranty

- Lifetime warranty against rust
- 15 year warranty on powder coating
- 15 year warranty on wood
- Spare parts always available