

# BLOC lounge table

1530

Designed by  
Atle Tveit, Lars Tornøe

Bloc lounge table can be used on its own or joined in rows to create long tables combined with benches, with or without a backrest and armrests.



AWARD FOR DESIGN EXCELLENCE

## Anchoring/assembly

Free-standing/mounted to the ground

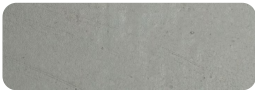


132.3 lb / 60 kg

## Primary material

Hot-dip galvanised steel

All steel components are hot-dip galvanised, which produces a matt grey surface after a while. We offer a lifetime anti-rust warranty.



8 mm

## Sustainability

Indicators	Global warming	Total energy used	Recycled materials
Unit	kg CO2	MJ	%
Cradle to Gate A1-A3	155	2372.24	2.24

## Certifications



## Warranty

- Lifetime warranty against rust
- 15 year warranty on powder coating
- 15 year warranty on wood
- Spare parts always available