

APRIL round table

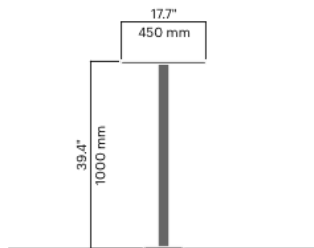
730A

Designed by
Tore Borgersen, Michael Olofsson, Espen Voll

April round table comes in different models and sizes. The round and square tables go particularly well with chairs, while the rectangular tables are ideal for benches with or without a backrest. The APRIL table is also available in an extended version for wheelchair users.



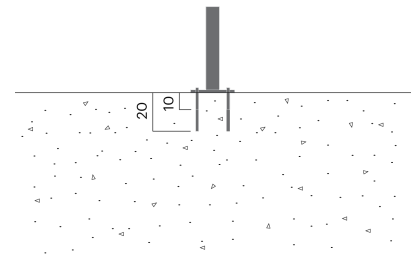
AWARD FOR DESIGN EXCELLENCE



35 lb / 16 kg

Anchoring/assembly

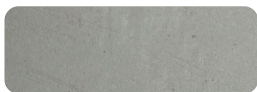
Type A - Base plate



Primary material

Hot-dip galvanised steel

All steel components are hot-dip galvanised, which produces a matt grey surface after a while. We offer a lifetime anti-rust warranty.



8 mm

Sustainability

Indicators	Global warming	Total energy used	Recycled materials
Unit	kg CO2	MJ	%
Cradle to Gate A1-A3	5728	79738	2.69

Certifications



Warranty

- Lifetime warranty against rust
- 15 year warranty on powder coating
- 15 year warranty on wood
- Spare parts always available