

BERLIN table

3731

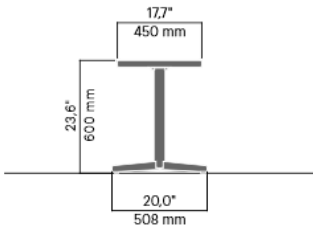
Designed by
Tore Borgersen, Michael Olofsson, Espen Voll

Berlin table is perfect for chairs in the same product family, but can also be used in combination with other chairs. It has space for four chairs.



Anchoring/assembly

Free-standing/mounted to the ground

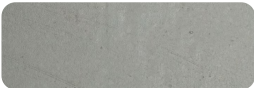


19 kg / 42 lb

Primary material

Hot-dip galvanised steel

All steel components are hot-dip galvanised, which produces a matt grey surface after a while. We offer a lifetime anti-rust warranty.



8 mm

Sustainability

Indicators	Global warming	Total energy used	Recycled materials
Unit	kg CO2	MJ	%
Cradle to Gate A1-A3	71.58	998.98	2.67

Certifications



Warranty

- Lifetime warranty against rust
- 15 year warranty on powder coating
- 15 year warranty on wood
- Spare parts always available