

CITY ashtray

263

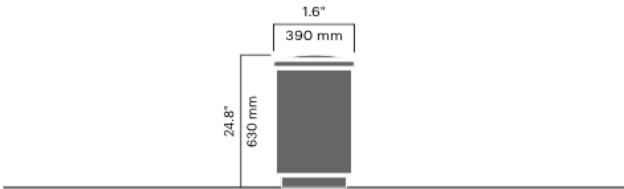
Designed by
Jarle Slyngstad, Roy Fiddaman, Jahn Aamodt

City ashtray comes in three free-standing models and two for mounting on a wall or post.



Anchoring/assembly

Free-standing/mounted to the ground

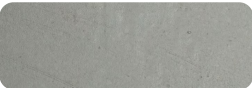


81.6 lb / 37 kg

Primary material

Hot-dip galvanised steel

All steel components are hot-dip galvanised, which produces a matt grey surface after a while. We offer a lifetime anti-rust warranty.



3 mm

Sustainability

Indicators	Global warming	Total energy used	Recycled materials
Unit	kg CO2	MJ	%
Cradle to Gate A1-A3	121.42	1345.53	2.66

Certifications



Warranty

- Lifetime warranty against rust
- 15 year warranty on powder coating
- 15 year warranty on wood
- Spare parts always available