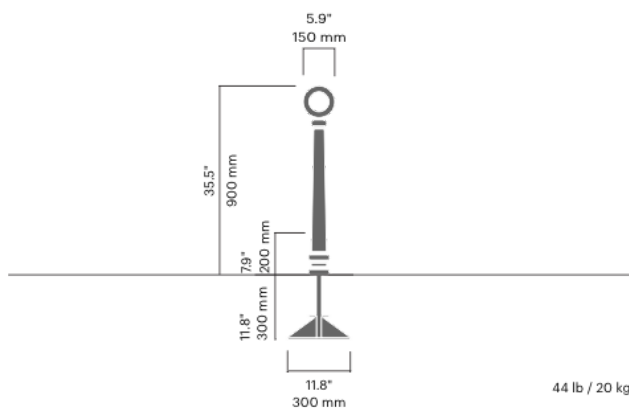


# CITY bicycle post

286

Designed by  
Jarle Slyngstad, Roy Fiddaman, Jahn Aamodt

City bicycle post is a classic bicycle post made from lacquered cast iron. Designed for two bicycles, it is mounted on a separate in-ground base. It comes in black (RAL 9005 Jet black) as standard.

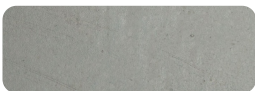


## Anchoring/assembly

## Primary material

Hot-dip galvanised steel

All steel components are hot-dip galvanised, which produces a matt grey surface after a while. We offer a lifetime anti-rust warranty.



## Sustainability

Indicators	Global warming	Total energy used	Recycled materials
Unit	kg CO2	MJ	%
Cradle to Gate A1-A3	0	0	0

## Certifications



## Warranty

- Lifetime warranty against rust
- 15 year warranty on powder coating
- 15 year warranty on wood
- Spare parts always available